

Bottom-Up Activities for Linked Open Data, Open Government in Japan

Takumi Shimizu (Keio University/ Open Knowledge Foundation Japan)

Masahiko Shoji (The Center for Global Communications, International University of Japan/ Open Knowledge Foundation Japan)

Fuyuko Matsumura (Aoyama Gakuin University/ Linked Open Data Initiative)

Toru Takahashi (Advanced Telecommunications Research Institute International /ATR Creative Inc./ Linked Open Data Initiative)

Iwao Kobayashi (Schalex Inc./ Linked Open Data Initiative)

Fumihiro Kato (Research Organization of Information and Systems / Linked Open Data Initiative)

Hiroshi Ueda (ATR Creative Inc.)

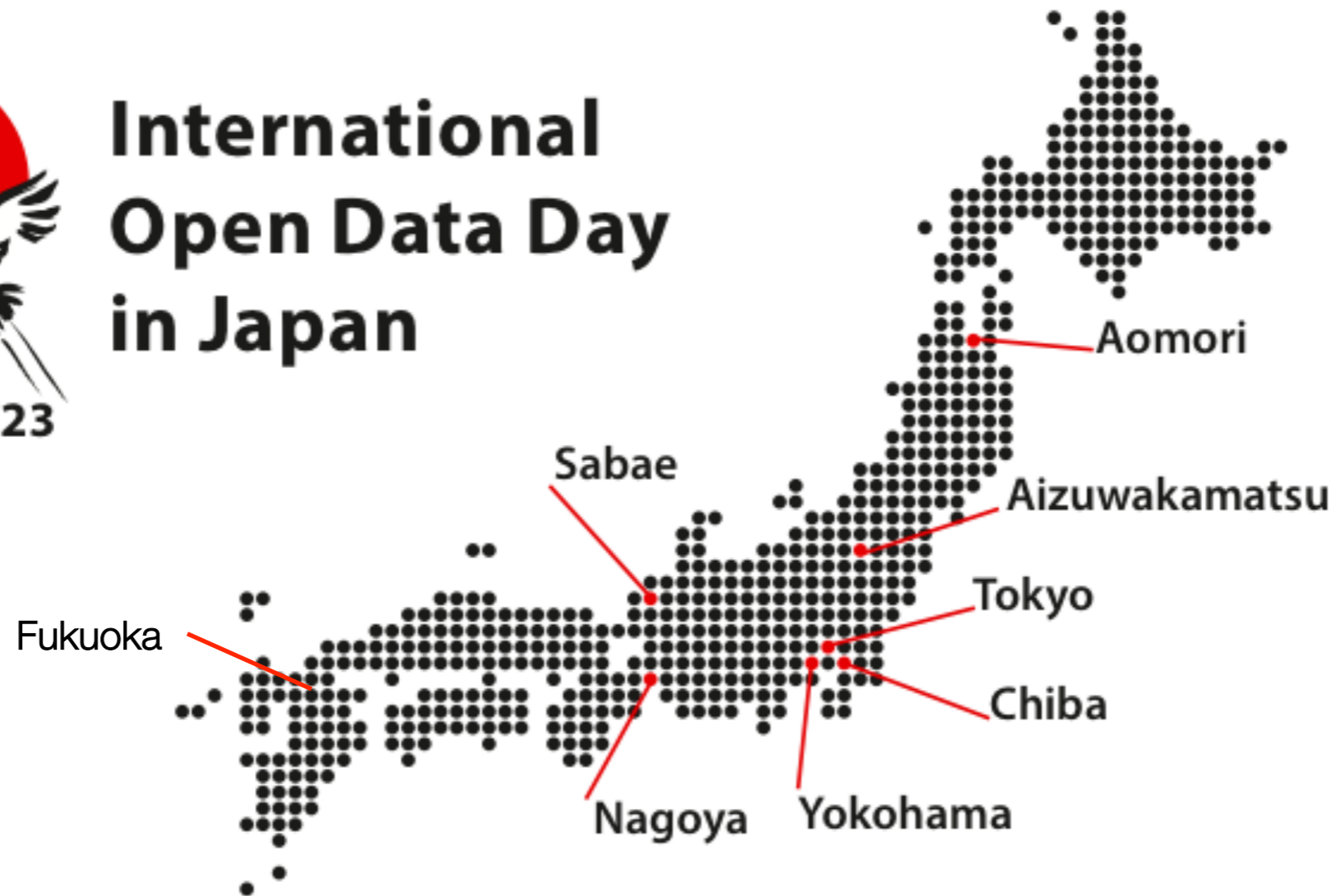
Yoshiaki Fukami (Keio University/ Linked Open Data Initiative)

Hideaki Takeda (National Institute of Informatics/ Linked Open Data Initiative)

We had over 300 participants in 8 cities on International Open Data Day. We will show how we can achieve it.



International Open Data Day in Japan



over 300 participants
in 8 cities

Executive Summary

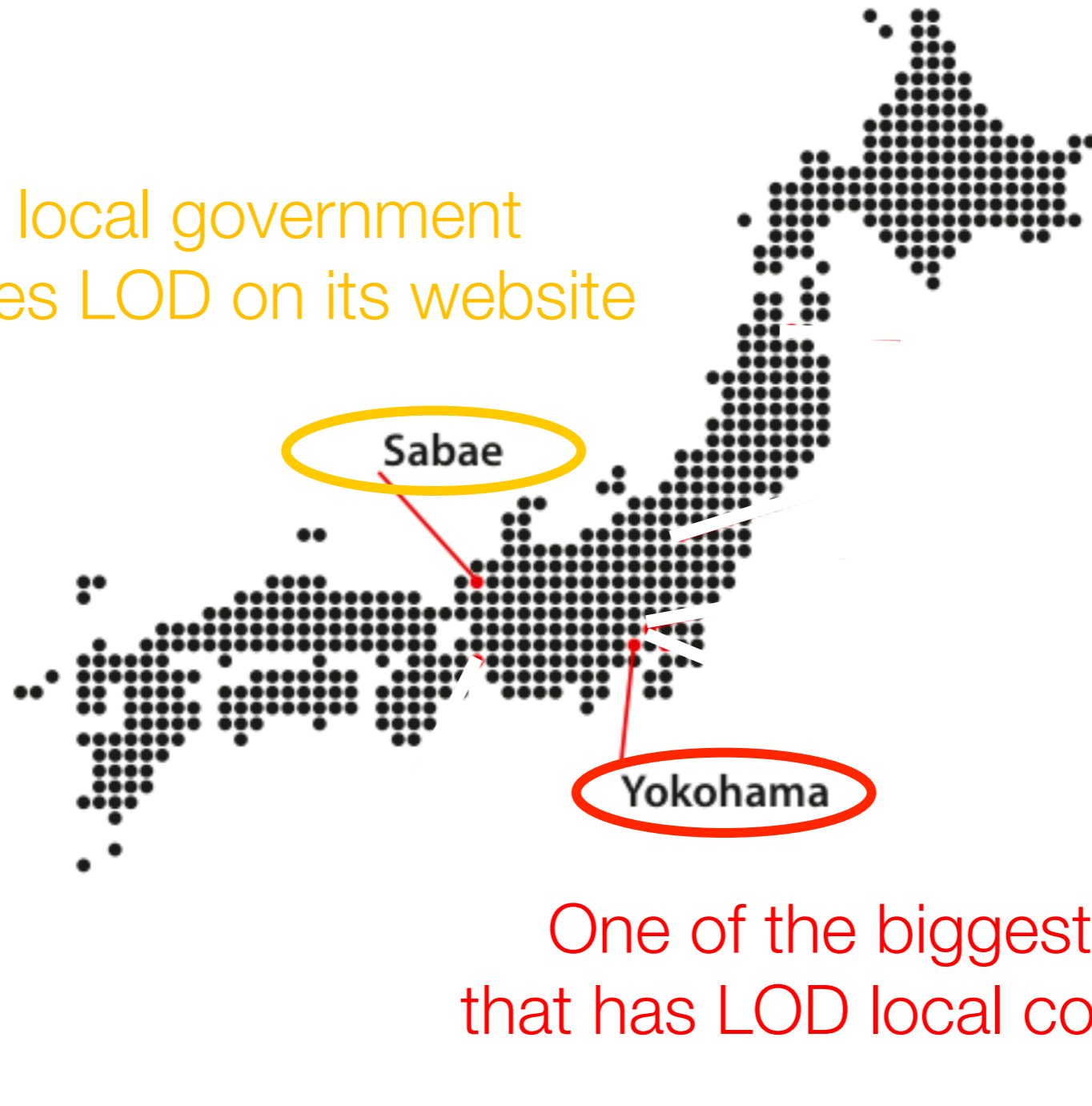
- **Bottom-up activities by multi-stakeholders** (communities, local governments, companies and universities) drive Linked Open Data movements in Japan.
- One of the key success factors is that academic institutions try to **engage with local governments and communities in early stage.**
- Community members that has same goals for LOD play a role of a **platform that promote collaboration among multi-stakeholders.**
- Neutral intermediary **coordinates nationwide activities** and helps to **share best practices** with each area.

LODAC(LOD for ACademia) Project: <http://lod.ac/>

- LODAC is a project of developing academic linked open data and a data exchange platform
- LODAC develops and shares LOD resources of academia and public field
 - LODAC Museum: Building LOD Resources of Collections of Museums
 - LODAC Species: Building Dictionary for Biodiversity
 - LODAC BDLS: Building Dictionary for Life Science
- This project tried to **engage with local governments and communities in early stage.**

Take the cases of Sabae-city and Yokohama-city that are the starting points of Japanese bottom-up activities for LOD.

The first local government that publishes LOD on its website



One of the biggest cities that has LOD local community

LODAC and local community members in Yokohama-city collaborate and make LOD applications in early stage.

- LODAC collaborated with local community members in Yokohama.
- **Yokohama Art Spot** is a mash-up application on local museum and event information. It demonstrates the value of combining data that come from different communities.

LODAC
Museum

×

Yokohama
Art LOD

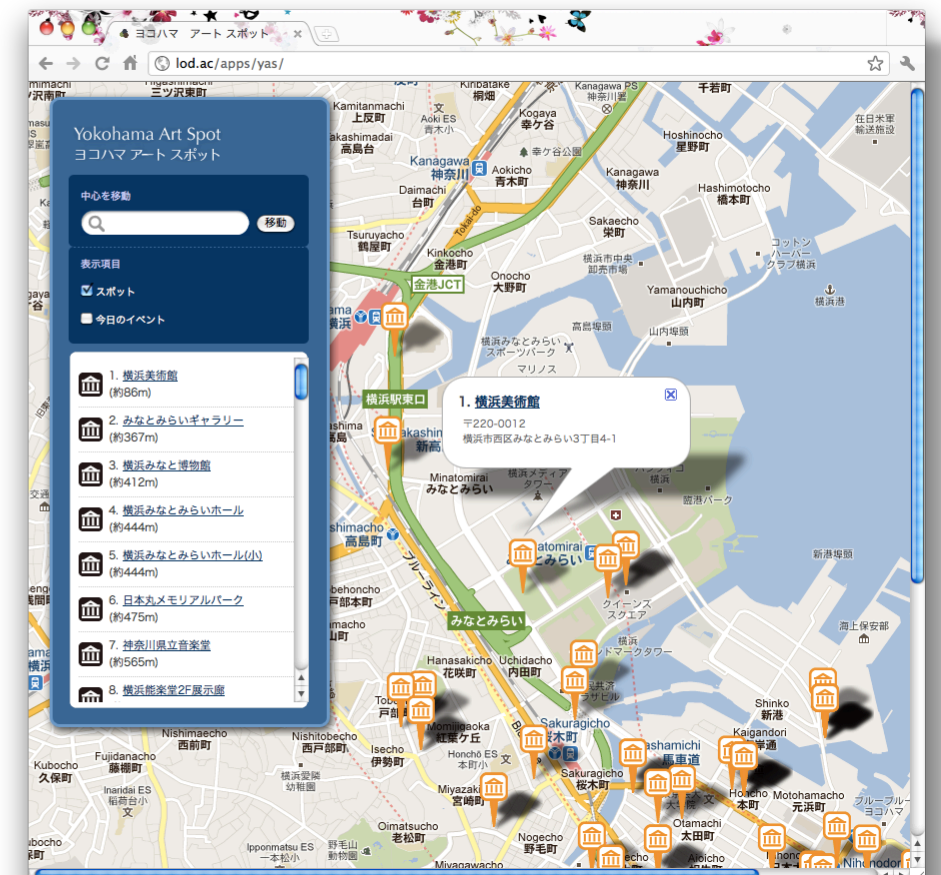
×

PinQA

Museum collection dataset
by **academia**

Event dataset
by **a local community**

Q&A dataset
by **a company**



Community members which has same goals play a role of a platform that promotes collaboration among multi-stakeholders.

- Local community members organized a new consortium (Yokohama Open Data Solutions Development Committee) to promote Yokohama Art Spot project and other LOD projects.
- The consortium involves local government members, NPOs, companies and universities that has same goals and wills for LOD.

The consortium promotes collaborations among them.

- **Local Government:** Yokohama-city, Yokohama Arts Foundation, ...
- **NPO:** Yokohama community Design Lab, ...
- **Company:** Fuji Xerox, ...
- **University:** LODAC, Tokyo City University, Global Communication Center, ...

Sabae-city is the first local government that publishes LOD on its website.

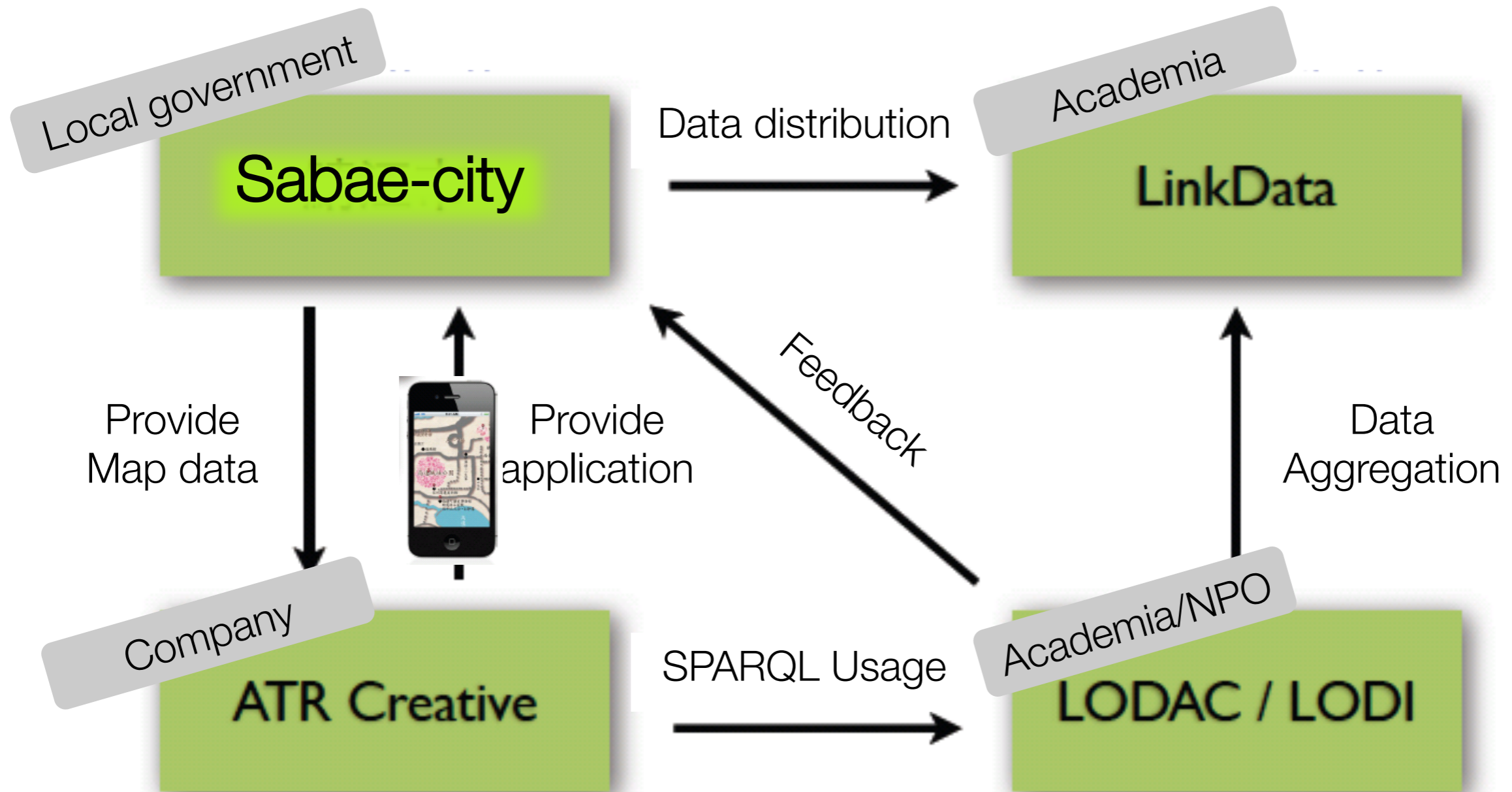
- 2011/12: Sabae-city published XML dataset with CC license.
- 2012/05: Sabae-city published RDF dataset.
- 2013/01: ATR Creative (private company) launched “Sabae-burari”.

- **“Sabae-burari” application**

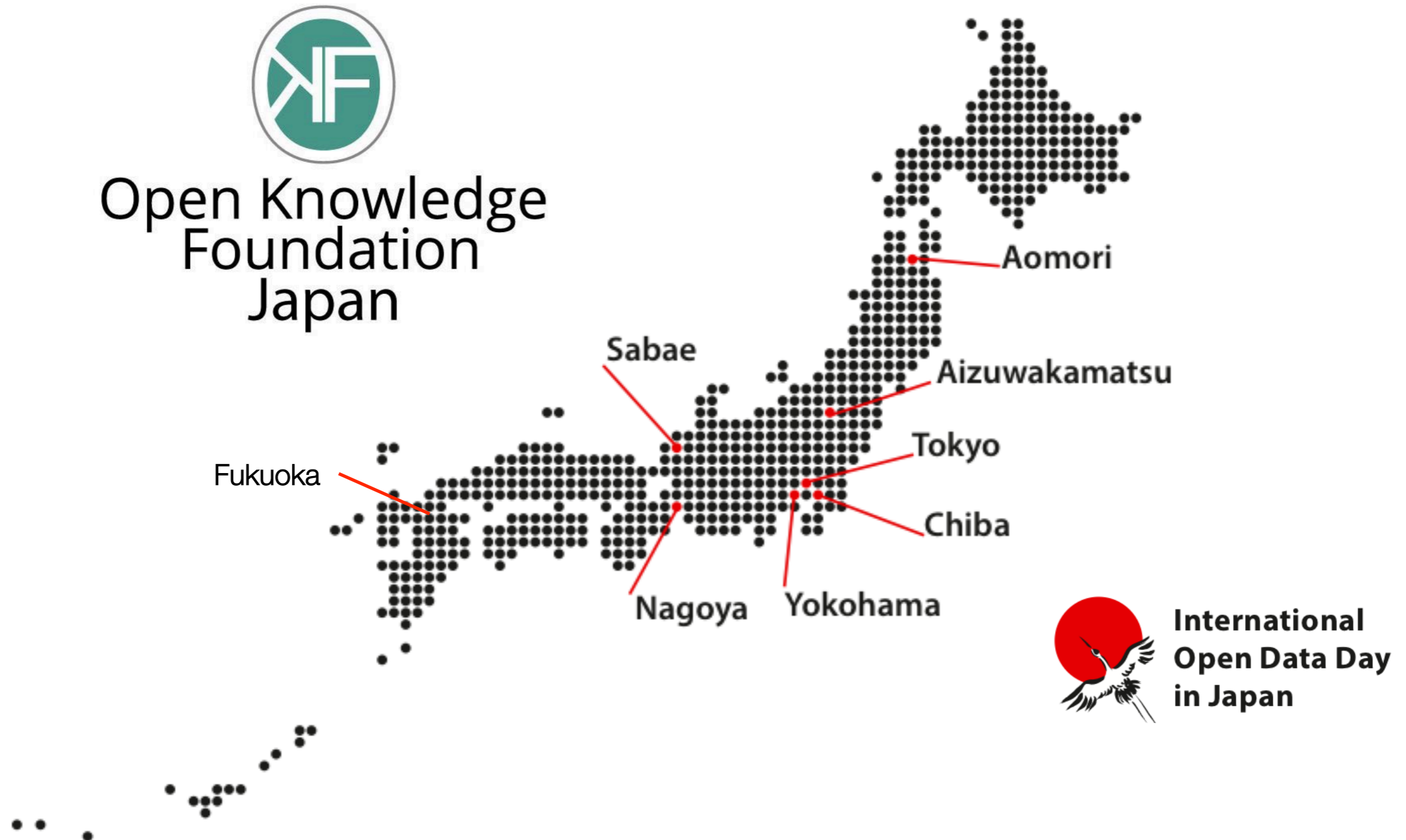
- An iPhone application that provides old-map information with current point of interest (sightseeing points, bus stops, etc.).
- Users can switch old and current map easily.



Sabae-city became one of the most advanced open data city because multi-stakeholders cooperated closely.



OKF Japan organized bottom-up activities around the country and coordinated Open Data Day in Japan.

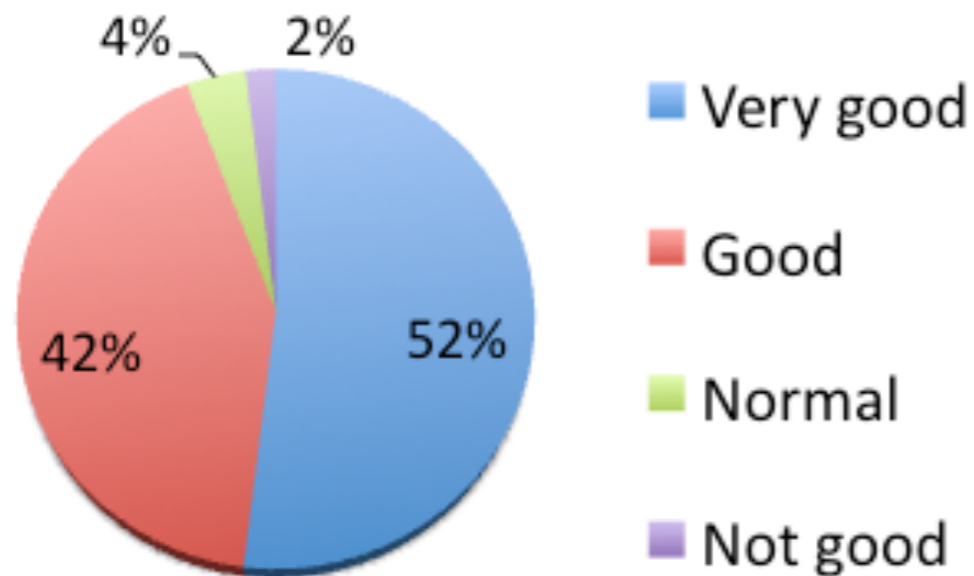


Some cities held a hackathon, and others held city tour with LOD application and edited Wikipedia pages.



Over 90% participants were satisfied with IODD in Japan. There were multi-stakeholders in the event.

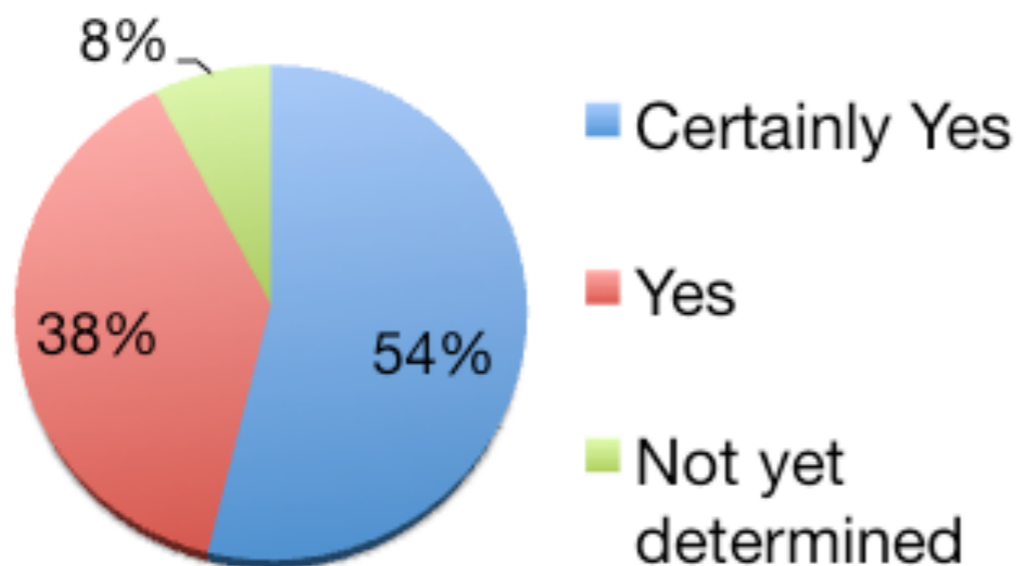
Overall, how would you rate IODD?



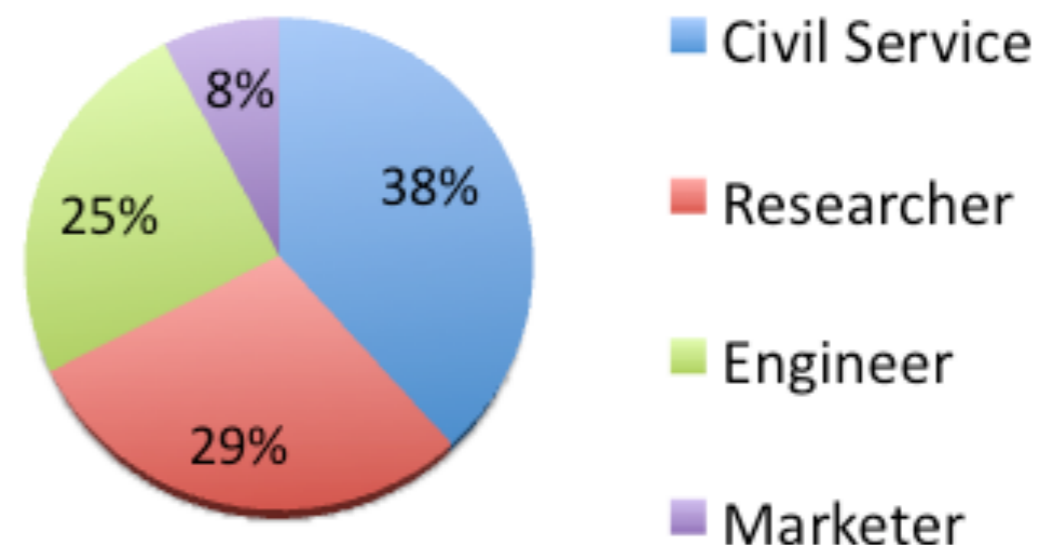
What is the biggest benefit of the event?

- Networking
- Sharing ideas with participants
- Learning about open data
- Improving skills etc..

Do you want to participate next IODD?



What is your job?



After IODD, OKF Japan helps to share best practices with each area by providing toolkits and tutorials.

- OKF Japan coordinates nationwide activities as a neutral intermediary.
- For sharing best practices around the world, OKF Japan provides toolkits and tutorials for localization of applications.
 - Where does my money go?
 - Fix my street, etc.

Qiita Search posts/users Qiita - A technical knowledge sharing platform for programmers.

```
% bundle exec rake preview
jekyll --server --auto
Configuration from /Users/hal/Documents/workspace/orezeni.github.com/_config.yml
Auto-regenerating enabled: . -> ./_site
[2013-02-25 17:41:37] regeneration: 1733 files changed
[2013-02-25 17:41:38] INFO WEBrick 1.3.1
[2013-02-25 17:41:38] INFO ruby 1.9.3 (2012-04-20) [x86_64-darwin12.2.1]
[2013-02-25 17:41:38] INFO WEBrick::HTTPServer#start: pid=99942 port=4000
```

という感じで、4000番ポートでローカルサーバが立ち上がれば成功です。ブラウザからlocalhost:4000で以下のようなページが表示されれば、とりあえず必要なライブラリはインストールできています。



WHERE DOES MY MONEY GO? 税金はどこへ行った?

あなたの税金がどこで使われているかをお示しします

The Daily Bread About Data Source Core Team Contact

あなたの世帯タイプは?

単身世帯 扶養有り

年収 ¥4,000,000 あなたの年間収入を選んでください あなたの横浜市税 (年間) ¥220,200

あなたの市税は、1日当たり、どこで、いくら使われているか?

健康福祉	子育て・教育	経済・観光	街づくり	環境	市民	交通・水道	政策	資源循環	消防
¥388.92	¥57.64	¥47.51	¥51.80	¥23.46	¥12.90	¥8.80	¥5.67	¥4.64	¥1.93

Concluding Remarks

- **Bottom-up activities by multi-stakeholders** drive LOD movements in Japan.
- One of the key success factors is that academic institutions (**LODAC**) try to **engage with local governments and communities (Sabae/Yokohama)** on early stage.
- Community members that has same goals for LOD play a role as a **platform that promote collaboration among multi-stakeholders.**
- Neutral intermediary (**OKF Japan**) **coordinates nationwide activities** and helps to **share best practices** with each area.